

CERTIFICATE OF LOCATION OF GOVERNMENT CORNER

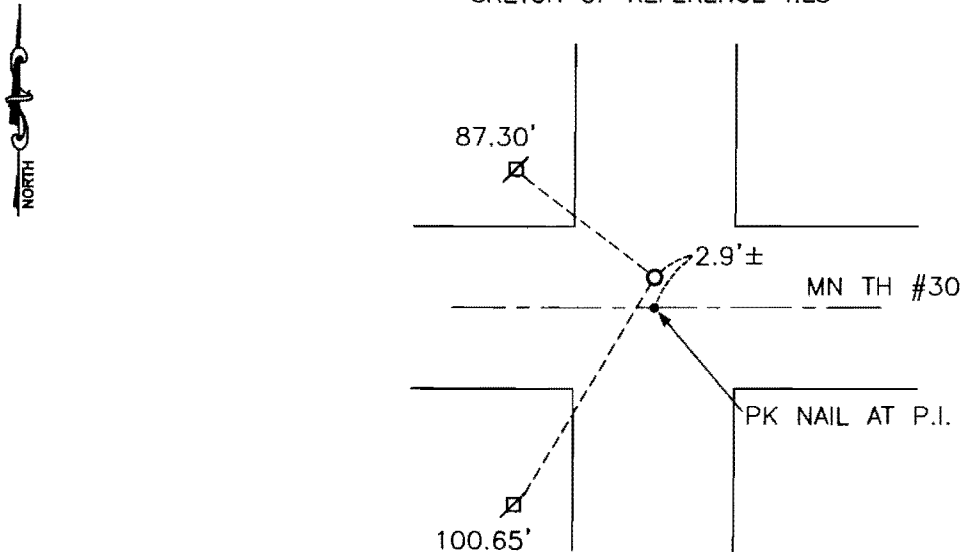
NORTHEAST Corner of Section 17, Township 106, Range 42, 5TH P.M.

STATE OF MINNESOTA, County of MURRAY

At the corner location shown on the sketch:

- On _____ found a _____
DATE
- left monument as found, lowered monument, removed monument (explain)
- On 07-30-2007 placed a SURVEY SPIKE WITH SEAL #43844
DATE

SKETCH OF REFERENCE TIES



Minnesota State Plane Coordinate
 System Murray County Datum
 NAD83 (1996)

N: 152994.531
 E: 463958.070

MNDot reference marker in cut-off utility pole 87.30' NW
 MNDot reference marker in utility pole 100.65' SW

Statement of evidence relative to this corner location is on back of page.

I hereby certify that this document and the data contained herein was prepared by me or under my direct supervision.

[Signature] Feb. 20, 2008
SIGNATURE DATE

Registration No. _____
 Land Surveyor, Professional Engineer
 County Surveyor, County Engineer

OFFICE OF THE COUNTY RECORDER

County of _____

I hereby certify that this document was filed in the Co. Recorders office at _____ .M on the _____ day of _____ A.D. 20 _____

County Recorder _____

By _____, Deputy

DOCUMENT NO. _____

Statement of Evidence

In 1866, J. W. Bishop did the original subdivision of the township.

In 1932, the P.I. was established as being 2.9' south of large stone at corner.

In 1982, the P.I. was established as being 2.9' south of large stone at corner.

On July 30, 2007, Bueltel-Moseng Land Surveying used MNDot ties to the P.I. and set a pk nail. Then a survey spike with seal #43844 was set 2.9' north of the P.I. at the corner.